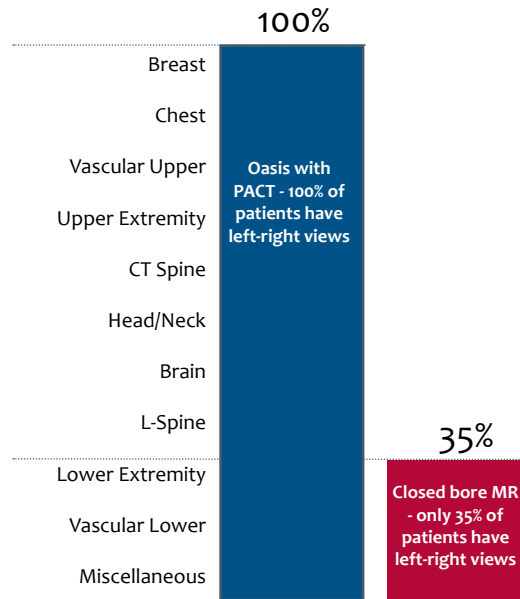


Oasis™ vs. Wide-Bore Tunnel

Advantages of Bore-less MRI

Advantages of Oasis

- Patients view is never obstructed
- Family members and technologist can maintain constant visual interaction with patient
- 660-lb. weight limit and 82cm table
- 2/3 of all patients scanned in a 70cm or wide bore MRI have their head in the tunnel
- Oasis with 1.2T vertical field magnet provides same image quality at 1.5T
- All patients and all anatomy scanned at isocenter on Oasis
- Exceptional wrist and shoulder imaging
- Leading motion compensation capability - RADAR
- Wide array of pulse sequences
- All planes and all coils
- Complete motion free studies



Open MRI is now clearly better at MRI of Reston